



WELD THE WORLD

Pioneer Pulse 403/503 MSR



Pioneer Pulse 403/503 MSR

MIG/MAG PULSE/DOUBLE PULSE/SYNERGIC/TIG LIFT/MMA/GOUGING

Pioneer Pulse 403/503 MSR is a professional three-phase inverter welding power source with separate wire feeder for pulsed MIG MAG, double pulse, Short arc - Spray arc welding of materials such as carbon steel, stainless steel and aluminum.

Pioneer Pulse 403/503 MSR versions also have MMA, TIG-LIFT DC and GOUGING processes which make these models real multifunctional. The high duty cycle allows you to weld continuously in any heavy industrial application.



The wire feeder 203 is equipped with a user - friendly control panel that ensures quick access to all parameters on the workstation

Rotating WF Support

Fastening hook for cable bundle

Robust Wheels

Pioneer Pulse 403/503 MSR

Special Functions : Power Root and Power Focus

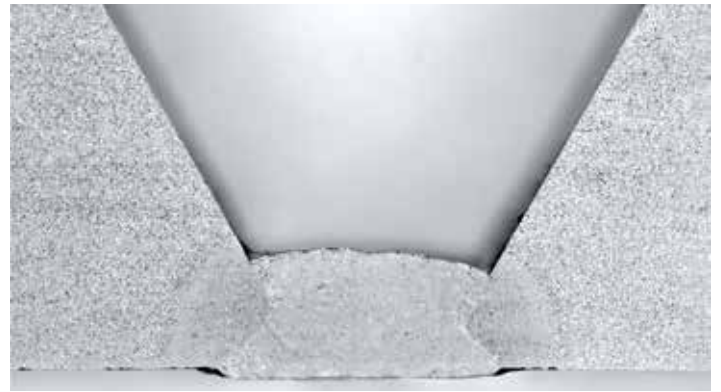
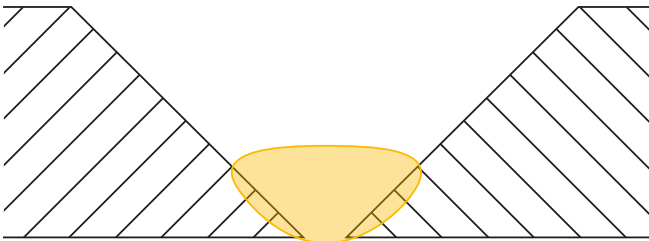


Power Root

The special Power Root function is a short arc transfer, controlled with a cold drop which ensures a very high quality during the root passes.

Features:

- Optimal first pass
- Quality of descending vertical welding
- Excellent operability
- Cold transfer of welding drop
- Perfectly jointed thin metal sheets
- Ideal for welding joints with large gaps



PG - Butt Weld

S355 - THK 3mm - GAP 1.5 mm

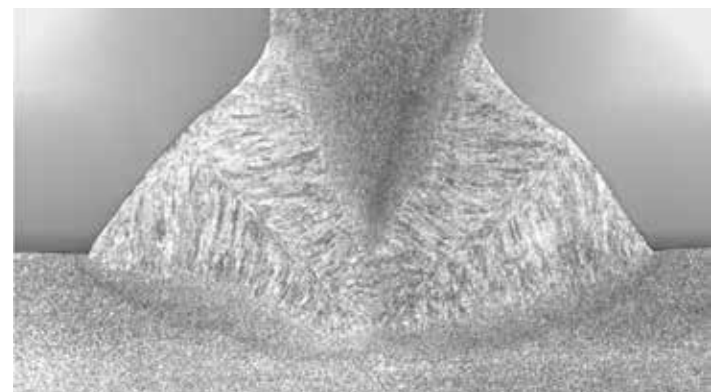
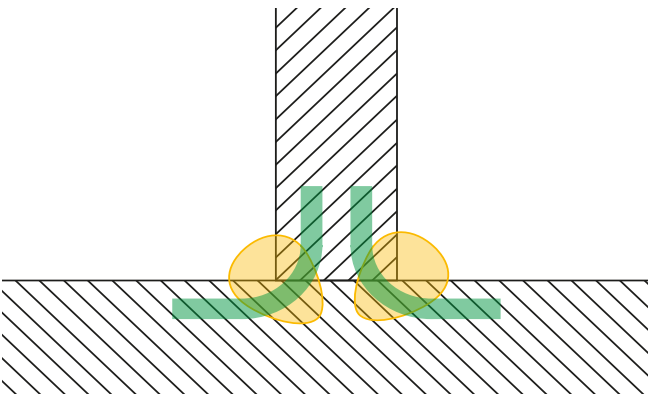


Power Focus

The special Power Focus function has been designed to reduce total welding costs, reducing the total number of joints to be welded.

Features:

- Higher penetration and lower risk of sticking
- Increased welding speed
- Higher arc stability even with long stick-outs
- Lower costs of joint preparation
- Reduced volumes of bevels to be filled



PB - Fillet Weld

S355 - THK 8 mm Welded from both sides

Pioneer Pulse 403/503 MSR

Configurations

Pioneer Pulse 403/503 MSR Basic



Pioneer Pulse 403/503 MSR Air



Pioneer Pulse 403/503 MSR with Trolley L



Pioneer Pulse 403/503 MSR with Trolley R



Pioneer Pulse 403/503 MSR

Accessories



Pioneer wheels kit and supports (Basic)



VP 03



Trolley L



Trolley R

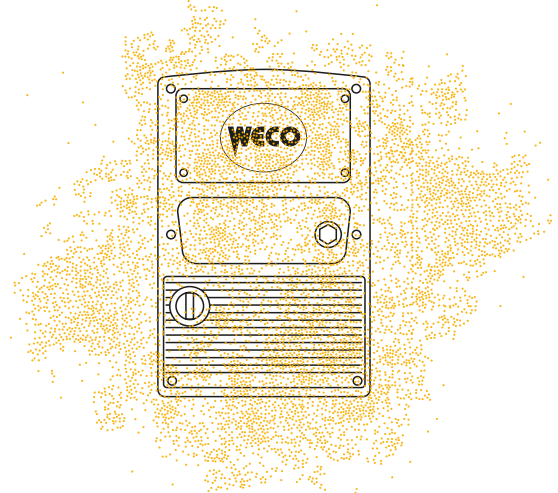


Pioneer Pulse 403/503 MSR

Test

Dust Test

An initial, very strict test, to ensure safety of all electronic parts of the power source. The **Pioneer Pulse 403/503 MSR** is fully insulated from the ingress of dust due to grinding operations or to other reasons, which could cause the electronic components to fail.



Vibration Test

To ensure the structural stability of the inverter and to allow the welding machine to be used in any environment, including those subjected to vibrations, such as on trucks, ships or other unstable structures. Each internal component of the **Pioneer Pulse 403/503 MSR** is securely fixed and free from vibrations.

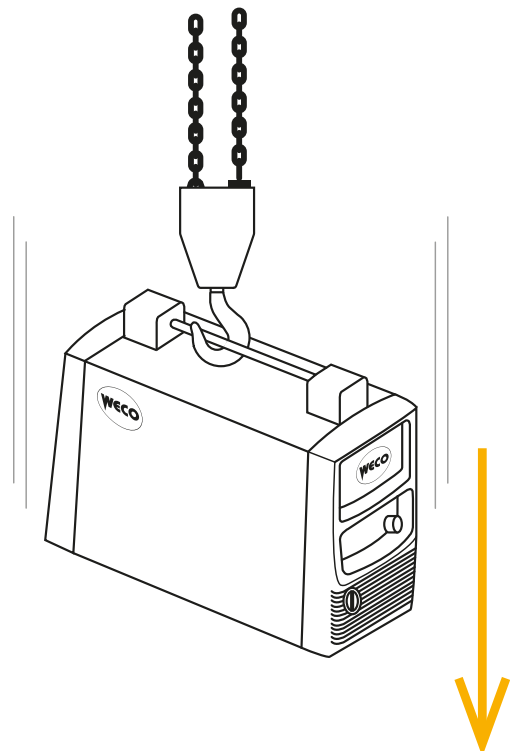


Safety Tests

The **Pioneer Pulse 403/503 MSR** has brilliantly passed all safety tests: IP tests, drop tests and stability tests on an inclined plane. Total safety is ensured in any working conditions.

Welding Test

The **Pioneer Pulse 403/503 MSR** is totally reliable, having been subjected to welding tests for over **3000 hours**. Its performance is guaranteed in any working location and in any part of the world, in adverse environments with different temperatures and ambient conditions.



Pioneer Pulse 403/503 MSR

Technical Data



WELD THE WORLD

PIONEER PULSE 403 MSR									
	3x400Vac ± 15% @ 50-60Hz								
	T25A								
	MIG-MAG			TIG			MMA		
% _{40°C}	--	65%	100%	--	--	100%	--	65%	100%
I_2	--	400A	370A	--	--	400A	--	400A	370A
% _{25°C}	--	--	100%	--	--	100%	--	--	100%
I_2	--	--	400A	--	--	400A	--	--	400A
I_2	10A-400A			10A- 400A			10A-400A		
U_0	10/62V								
$P_{I MAX}$	19,3kVA - 16,4 kW								
IP	23								
	460x990x1370mm								
	110Kg								

WF203	
	42VDC
P_{MAX}	120W
r.p.m	270
	1,5 - 24,0 m/min
	n°4 (ø37 mm - ø19 mm) Fe 0,6 - 1,6 mm Al 0,8 - 3,2 mm FCW 1,0 - 3,2 mm
	200 mm (5 kg) - 300 mm (15 kg)
IP	23
	680 x 280 x 380 mm
	15,8 kg

PIONEER PULSE 503 MSR									
	3x400Vac ± 15% @ 50-60Hz								
	T32A								
	MIG-MAG			TIG			MMA		
% _{40°C}	30%	60%	100%	35%	60%	100%	30%	60%	100%
I_2	500A	430A	400A	500A	450A	420A	500A	430A	400A
% _{25°C}	--	--	100%	--	--	100%	--	--	100%
I_2	--	--	500A	--	--	500A	--	--	500A
I_2	10A-500A			10A- 500A			10A-500A		
U_0	10/62V								
$P_{I MAX}$	25,5kVA - 22,3 kW								
IP	23								
	460x990x1370mm								
	110Kg								

CU23	
	1x400Vac ± 15% @ 50-60Hz
	T 1.6 A
$P_{1 L / MIN}$	0,95kW
$P_{MAX L / MIN}$	2.8kW
P_{MAX}	0,32MPA (50HZ) - 0,43MPA (60HZ)
	4.5l
IP	23 S
	720 x 290 x 235 mm
	30,0 kg

A well-established industrial concern whose reliability of products is ensured by its considerable investments in research, design and testing.

WECO has been producing and selling welding equipment since 1997. Its registered office and operational site, located in the north-east of Italy, includes offices, a production area, a design and storage area, which cover the requirements of a wide national and international sales network. The wide range of welding machines and the availability of a large warehouse allows us to meet the varying needs of our customers within a short period of time. Our dynamic management, our proven experience in sales issues, as well as our knowledge of application problems ensure our company a leading edge within our industry. WECO provides solutions that improve productivity, optimise intervention times, minimise operating costs, ensuring excellent performance at all times, in any operating conditions.



WELD THE WORLD

WECO srl
Via S. Antonio 22 - Loc. Belvedere
36050 Tezze sul Brenta (Vicenza) - Italy
Tel +39 0424 561 943 - fax +39 0424 561 944
www.weco.it

Distributor

Rev. 02/2020
Weco catalogues are indicative. We reserve the right to change the specification of any product without prior notice.